

# NMUA Connectors

Type B Liquid-Tight Flexible  
Non-Metallic Conduit (LFNC)  
Connectors

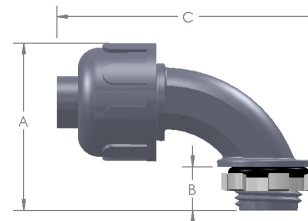


### Construction

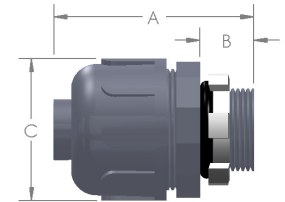
- All type nylon 66 construction with “O” ring and steel lock nut included.
- Reusable and durable connectors are flame retardant and resist salt water, weak acids, gasoline, alcohol, oil grease, and common solvents.

### Installation

- Connectors used with standard non-metallic **Type B** conduit for easy installation.
- Approved for both exposed and concealed locations. Rated for temperature ranges of -40°F to +212°F (-40°C to +100°C).
- Easy to install, by pushing the non-metallic conduit onto the smooth ferrule and tightening the sealing nut.
- Manufactured in a full range of trade sizes from 3/8" through 2".
- Complies with NEC Article 356 and UL Standard 514B File No. E-322120.
- Straight connectors approved for direct burial and in concrete trade sizes 3/8" through 2".



90° Connector NPT 3/8" through 2"



Straight Connector NPT 3/8 Through 2"

### NEC Articles

- Article 250.102 Equipment Bonding Jumpers
- Article 250.134 (B) Equipment Grounding
- Article 356 Liquid-Tight Flexible Nonmetallic Conduit (LFNC-B)
- Article 501.10 (B) (2) Class I Div. 2
- Article 502.10 (A) (2) and (B) (2) Class II Div. 1 & 2
- Article 503.10 (A) (3) and (B) Class III Div. 1 & 2
- Article 620.21 Elevator Wiring Methods
- Article 645.5 (E) (2) Under Raised Floors

[www.ul.com](http://www.ul.com)  
[www.nfpa.org](http://www.nfpa.org)  
[www.nema.org](http://www.nema.org)

[www.csa-international.org](http://www.csa-international.org)  
[www.naed.org](http://www.naed.org)  
[www.anametelectrical.com](http://www.anametelectrical.com)

• UL LISTED  • CSA CERTIFIED  • RoHS WEEE COMPLIANT

## NMUA Connectors

Gray nylon 66

### Product Specifications

### Ordering Information

Electrical			Dimensions			Approx Weight lbs.	Ordering Information			
Trade Size	K.O. Size		Inches				PER	Straight Connectors		90° Connectors
Inches	mm	Inches	A	B	C	Pkg.	Standard Package	AEI PIN	Standard Package	AEI PIN
3/8	12	1/2	1.545	0.535	1.400	1.25	25	500001		
3/8	12	1/2	2.242	0.562	3.120	0.5			10	500008
1/2	16	1/2	1.545	0.535	1.400	1.25	25	500002		
1/2	16	1/2	2.242	0.562	3.120	0.5			10	500009
3/4	21	3/4	1.600	0.550	1.700	0.7	10	500003		
3/4	21	3/4	2.550	0.545	3.600	1			10	500010
1	27	1	1.975	0.670	2.000	0.7	5	500004		
1	27	1	3.150	0.630	4.125	0.8			5	500011
1-1/4	35	1-1/4	2.293	0.645	2.400	1	5	500005		
1-1/4	35	1-1/4	3.420	0.645	5.200	1.4			2	500012
1-1/2	41	1-1/2	2.175	0.660	2.670	0.6	5	500006		
1-1/2	41	1-1/2	4.510	0.660	5.200	0.8			2	500013
2	53	2	2.400	0.670	3.280	0.8	2	500007		
2	53	2	4.850	0.670	5.800	1			1	500014