

NPT Compact Fittings

Nickel Plated Brass NPT Thread
Flexible Metal Conduit (LFMC) Fittings



Construction

- Nickel plated brass fitting, has a four piece construction consisting of a gland nut, sealing ring, high tensile grounding cone and body.
- Included sealing ring and galvanized steel lock nut provides a means for connecting the fitting to boxes.
- Excellent corrosion resistance, strength and durability.

Installation

- Fitting is ideal for use with standard liquid-tight conduit to allow easy installation. IP 66/67 Rated when installed with approved conduit.
- Approved for both exposed and concealed locations. Rated for temperature ranges -49°F to + 221°F (-45°C to +105°C).
- Suitable for harsh industrial, food and beverage, petrochemical, waste water, salt water and other corrosive applications
- Suitable for use in hazardous locations per NEC Articles 501 Class I Div. 2, Article 502 Class II Div. 1 & 2, Article 503 Class III Div. 1 & 2.
- Compact design is ideal for tight spaces.
- Complies with UL Standard 514B and CSA C22.2 combined File No. E234207



Straight Fitting NPT Thread 3/8" through 2"



90° Fitting NPT Thread 3/8" through 2"

NEC Articles

- Article 501.10 (B) (2) Class I Div. 2
- Article 502.10 (A) (2) and (B) (2) Class II Div. 1 & 2
- Article 503.10 (A) (3) and (B) Class III Div. 1 & 2

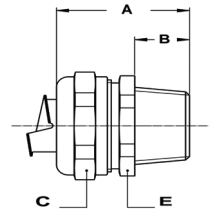
www.ul.com
www.nfpa.org
www.nema.org

www.csa-international.org
www.naed.org
www.anametelectrical.com

U.L. LISTED • CSA CERTIFIED • RoHS WEEE COMPLIANT

NPT Straight Compact Fittings

Thread	Sealtite Size (inch)	Min. Internal Bore (mm)	Dimensions in mm					Standard Package	Article Number	Weight (Lbs/100)
			A	B	C	D	E			
NPT 1/2"	3/8"	10.4	32	12	26	-	24	10	7140122	10.1
NPT 1/2"	1/2"	13.8	34	12	29	-	27	10	7140162	11.9
NPT 3/4"	3/4"	18.5	35	12	35	-	33	5	7140202	17.2
NPT 1"	1"	23.8	37	13	45	-	44	5	7140262	31.3
NPT 1 1/4"	1 1/4"	31.9	42	15	53	-	52	2	7140352	43.2
NPT 1 1/2"	1 1/2"	36.9	48	16	62	-	60	2	7140402	65.5
NPT 2"	2"	47.9	54	19	76	-	72	2	7140502	105.4



NPT 90° Compact Fittings

Thread	Sealtite Size (inch)	Min. Internal Bore (mm)	Dimensions in mm					Standard Package	Article Number	Weight (Lbs/100)
			A	B	C	D	E			
NPT 1/2"	3/8"	10.4	27	12	26	32	24	10	7149122	15.9
NPT 1/2"	1/2"	13.8	30	12	29	34	27	10	7149162	18.5
NPT 3/4"	3/4"	18.5	34	12	35	40	33	5	7149202	38.6
NPT 1"	1"	23.8	41	13	45	49	42	5	7149262	64.8
NPT 1 1/4"	1 1/4"	31.9	46	13	53	50	52	2	7149352	93.5
NPT 1 1/2"	1 1/2"	36.9	56	14	62	57	60	2	7149402	128.3
NPT 2"	2"	47.9	62	16	76	68	72	2	7149502	212.1

